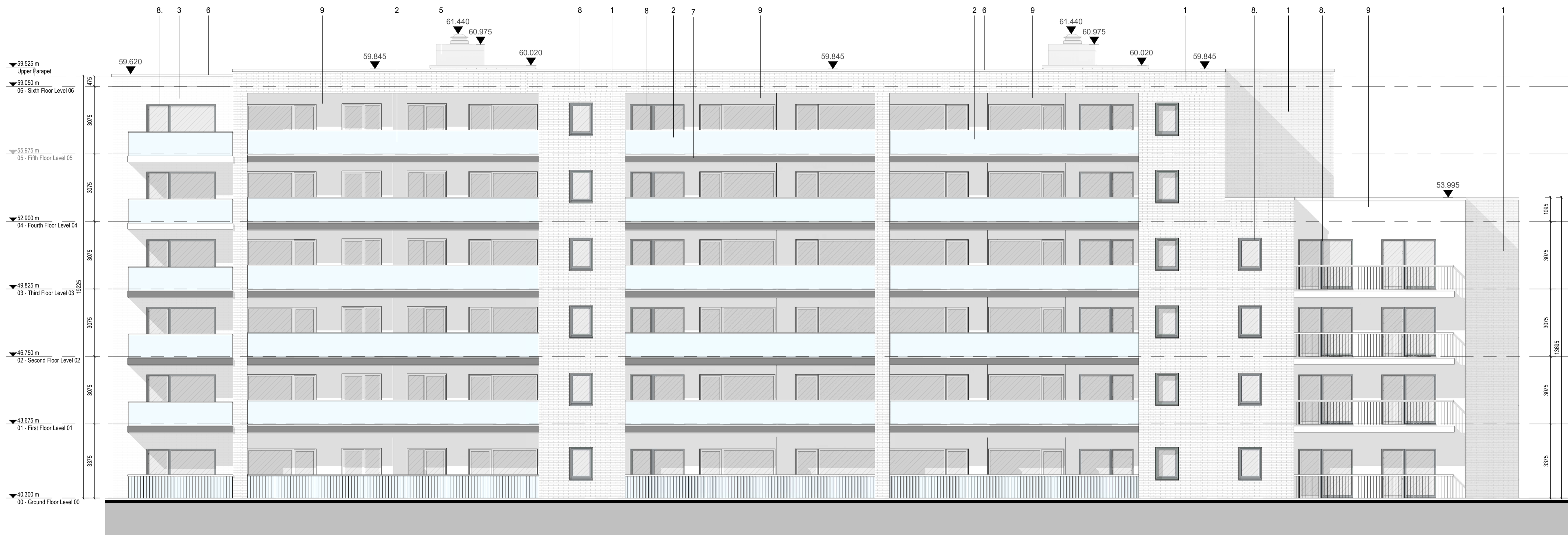
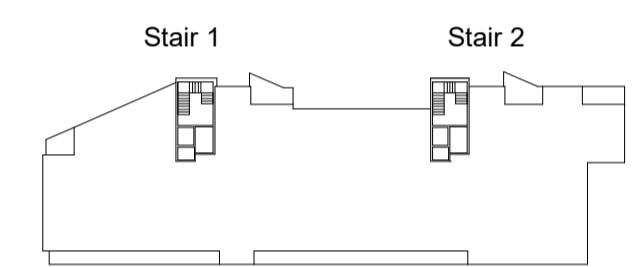


DESIGN INTENT DRAWING



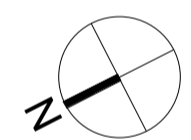
Material Legend

- 1 Oatmeal Brickwork
- 2 Glazed balustrade with power-coated metal handrails
- 3 Grey Brickwork
- 4 Powder Coated Aluminium Double Glazed Curtain Wall
- 5 Zinc Standing Seam Cladding
- 6 Powder Coated Pressed Metal Coping Detail
- 7 Powder Coated Pressed Metal
- 8 Powder Coated Aluminium Double Glazed Windows
- 9 Render Finishing Off White
- 10 Selected Limestone
- 11 Obscure Back-Painted Glazing
- 12 Charcoal Brickwork



West Elevation

Key Plan (NTS)



1 GA - West Elevation

1 : 100

Rev	Description	Date	Dr by	App by
Project Stage				

PLANNING

Client:
Eastwise Construction Swords Limited

Project:
Hartfield Place
Swords Road, Whitehall, Dublin 9
D09 C7F8

Drawing Title:
BLOCK G - West Elevation GA - 472 Units

Drawn	Checked	Paper Size	Scale	Date
DP	CM	A1	1 : 100 @A1	Mar. 2022

Project No.	Drawing No.	Classification	Revision
HARTPL	072522		

File Name:
HARTPL-CWO-BG-ZZ-DR-A-072522

Status:
S2-Suitable For Information



No.1 Sarsfield Quay, Dublin 7, D07 R9FH
t: 01 518 0170 e: admin@cwoarchitects.ie
Dublin | Cork | Galway | London | UK & Europe +
www.cwoarchitects.ie